

Project Update

The Little Jackfish River Hydroelectric Project is in its third year of detailed studies in order to assess the feasibility and potential impacts. Since the last newsletter, there have been three significant changes to the scope of the Project and OPG has commenced studies on these changes as part of the Environmental Assessment of the Project.

1. Construct only the Hydroelectric Generating Station (GS) at the Lower Site

OPG currently proposes to develop only the Lower Site for hydroelectric generation. A design concept will be presented at the upcoming Open Houses. The size and design of the proposed Lower Site GS will stay the same at approximately 73 megawatts. The proposed Upper Site may be developed at a later date depending on system requirements.

2. Automate Summit Control Dam

With one GS, OPG proposes to automate the existing Summit Control Dam which is located at the north end of the Little Jackfish River, immediately south of Mojikit Lake (Figure 1). The automation of Summit Control Dam will allow for improved flow management and water storage within the watershed. This automation will require a 44kV transmission line and an access road to the dam. The road will provide access for construction and

maintenance. OPG will attempt to route the access road and transmission line along existing logging roads in the area. Access restrictions and controls on the road to the dam will need to be a key part of the proposal.

3. Construct a Transmission Line from the Lower Site GS to the Electricity Grid

OPG proposes to include in the scope of the project a transmission line to connect the proposed Lower Site GS to the provincial grid. Five transmission route alternatives were explored on both the east and west side of Lake Nipigon. The most practical and feasible alternative was found to be a transmission line to Kama Bay via the east side (Figure 1). The other alternatives were eliminated due to technical, economic and/or environmental reasons. Environmental assessment studies for this alternative are already underway and consultation is occurring in June.

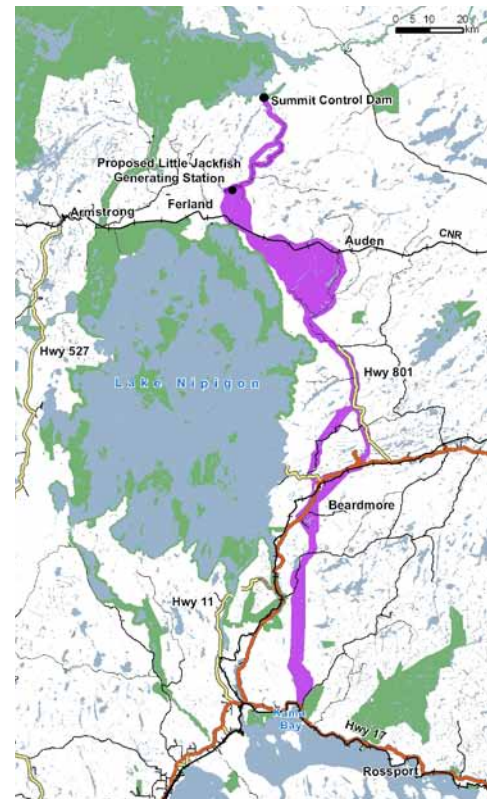


Figure 1: Map of the proposed Little Jackfish River Hydroelectric Project

Studies at the Lower Site continue in order to assess the feasibility and impact of the proposed generating station



OPG is proposing to improve flow management and storage by automating Summit Control Dam

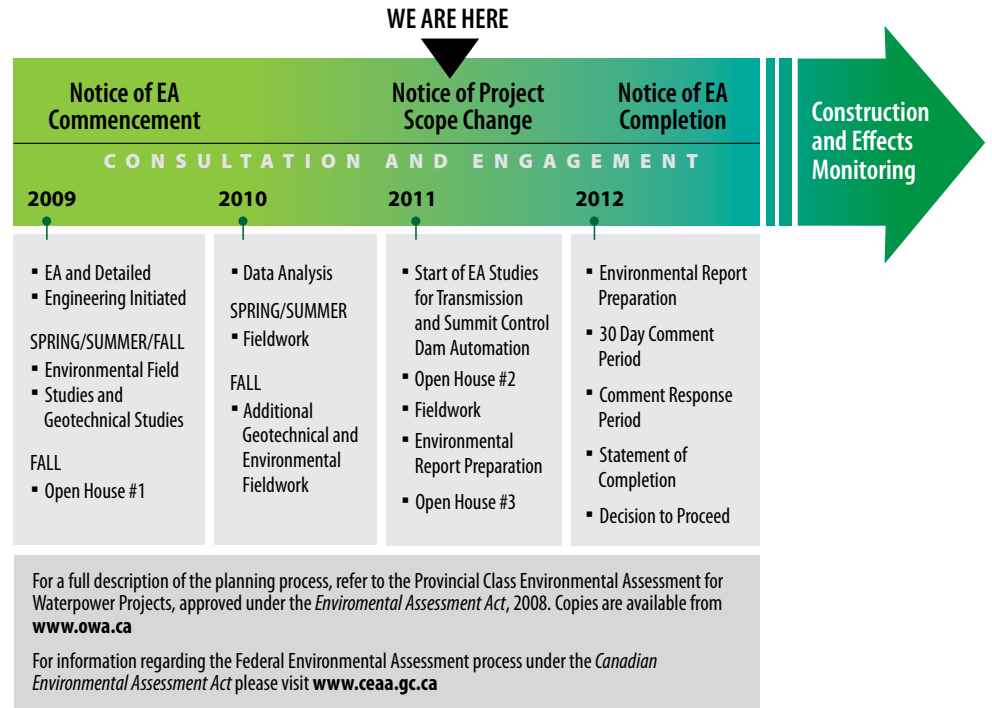


The Proposed Transmission Corridor Study Area

The proposed 180 kilometre long transmission line would be a wooden pole, 230 kV transmission line with a right-of-way of approximately 45 metres wide. The proposed transmission line would connect to the existing 230 kV transmission line north of the Trans-Canada Highway, west of the Kama Cliffs. Around Beardmore there have been two alternative routes identified. The transmission corridor study area then generally follows Highway 801 to south of the Ombabika River. Between the Ombabika River and the proposed Lower Site GS, various alternative routes will be considered.

The proposed transmission corridor study area, (shown in purple in Figure 1), varies in width from 500 metres to 4 kilometres. The wide proposed transmission corridor study area allows for OPG to consult with interested people and consider various alternative alignments for the 45 metre transmission right-of-way. Factors that will lead to the final alignment will include Aboriginal consultation; public and agency consultation; and, detailed field studies. This will help identify a final route that minimizes environmental, social-cultural and economic impacts.

Where are we in the Environmental Assessment Planning Process?



Open Houses

Interested people are invited to participate in the environmental assessment process. At the upcoming Open Houses, OPG will provide an update on the status of the proposed Project, share some environmental study results and seek input regarding the proposed transmission corridor study area. You are welcome to attend any of the following Open Houses, which will be held from 4:00 pm – 8:00 pm.

- **June 13, 2011** at the Beardmore Community Centre, Beardmore
- **June 14, 2011** at the Red Rock Inn, Red Rock
- **June 15, 2011** at the Lions Hall, Armstrong
- **June 16, 2011** at the Travelodge Airline, Madrid Room, Thunder Bay

For Information

or to be put on our mailing list, please contact:

Heather Brown,
Senior Environmental Advisor, OPG,
700 University Avenue, H18,
Toronto, Ontario, M5G 1X6,
phone: 416-592-6818,
e-mail: heather.brown@opg.com

Phil Shantz
Manager - Aboriginal, Land, Resource and Northern Projects,
SENES Consultants Limited,
121 Granton Drive,
Richmond Hill, Ontario, L4B 3N4,
phone: 905-764-9380,
e-mail: pshantz@senes.ca.

Media Inquiries call: 1-877-592-4008

Additional information, including the Project Description can be found at:
www.littlejackfish.com.